

Northwest Indiana Business Roundtable

2009 Reliability Seminar



The NWIBRT 2009 Reliability Seminar will be Thursday, October 22, 2009 at the U.S. Steel Midwest Training Center located close to Rt. 12 & Rt. 249 in Portage, Indiana. Seminar check-in and refreshments begin at 7:00 AM., seminar kickoff will be at 7:30 AM.

Details on the 5 presentations and panel discussion with a general theme of reliability concerns during reduced operations are below. Reliability vendor exhibits, picnic lunch and refreshments are included. **Pre-registered/Prepaid \$15. At the door \$25 and as seating permits.** Please call Brian Biby at (219)-399-6753 for more info. Registration info and form are on reverse side.



Fan Performance and Troubleshooting - Vern Martin, Flowcare, touches on many aspects of fan design and performance measures leading to quiet, smooth, stable, and reliable operation. He also outlines ways to identify many performance issues and mitigate them in fully utilized, reduced demand, intermittent, and extended idle operation modes.



Control Valve Inspection and Maintenance - Jim Ladd, Cornerstone Electrical Consultants, will discuss requirements for control valve inspection and maintenance programs. Details of control valve inspection and maintenance tasks will be shared. He will also address added considerations for low use, intermittent, and idled valve scenarios.



Conveyor Reconstruction Case History - Mike Shebel, Nisource/NIPSCO, will share the failure and reconstruction of a critical coal conveyor at their Michigan City Generating Station. He will cover the failure, root cause failure analysis, demolition, redesign, procurement, fabrication, erection, and commissioning, all completed in only 99 days.



Hydraulics and Pumping Systems - Rob Shepherd and Mark Onweller, CMA/Flodyne/Hydradyne, will outline hydraulic and pumping system maintenance requirements. They will also discuss

countermeasures for issues triggered by unusual process requirements and intermittent & idle scenarios.



Using MCE and CSA to Enhance Motor Reliability - Joe Oliver, JOA Inc., will discuss the use of Motor Circuit Evaluation and Current Signature Analysis as PdM tools for motor and system health. These results, in both fully utilized and intermittent operating scenarios, can be used to drive improved motor reliability in the field, in the shop, and in storage.



Managing Reliability During Intermittent Production Periods: A Panel Discussion - Willis Shepherd, NWIBRT, will lead panelists from ArcelorMittal, DMI, NIPSCO, Tonn and Blank, and CMA/Flodyne/Hydradyne in a discussion focused on managing reliability through these troubled economic times. Reduced & intermittent operating schedules create new challenges. Have your questions ready!

- 7:30 Welcome and Introductions
- 7:55 Fan Performance and Troubleshooting
- 8:55 Morning Break, Vendor Exhibits
- 9:15 Conveyor Reconstruction Case History
- 10:20 Using MCE and CSA to Enhance Motor Reliability
- 11:05 Grilled Picnic Lunch & Vendor Exhibits
- 11:50 Control Valve Inspection and Maintenance
- 12:40 Hydraulics and Pumping Systems
- 1:25 Afternoon Break, Vendor Exhibits
- 1:55 Managing Reliability Panel Discussion
- 3:30 Adjourn

NWIBRT Web Links—

- Home Page: <http://www.nwibr.org>
- Reliability Standards: <http://www.nwibr.org/stanspec.htm>
- Membership Info: <http://www.nwibr.org/joinus.phtml>

Other Reliability Links—

- M & R Professionals: <http://www.smrp.org>
- Reliability Web: <http://www.reliabilityweb.com>
- Vibration Institute: <http://www.vibinst.org>
- Trib. & Lube Engrs: <http://www.stle.org>
- Iron & Steel Tech: <http://www.aist.org>

The vendor booths will be available throughout the day... Stop in, take a look, see what they can do for you...

Northwest Indiana Business Roundtable

Reliability Seminar, October 22, 2009

Pre-registration/Pre-payment Deadline: October 15, 2009

Company Name: _____

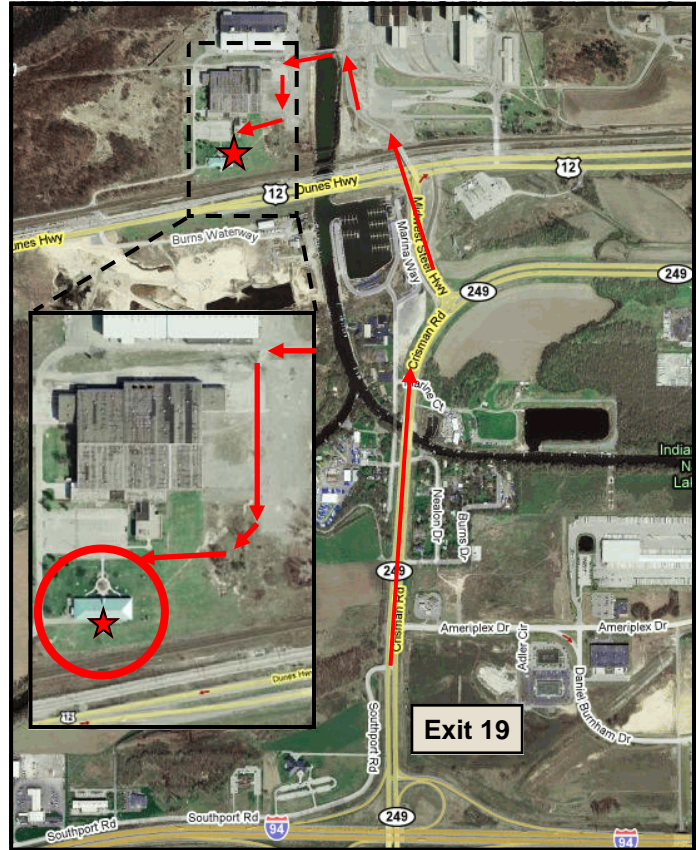
Names of Participants:

Total Fee: Participants X \$15.00 = _____

Please submit form and payment to:

NWIBRT
4111 Franklin Street, Suite B
Michigan City, Indiana 46360

For additional registration, payment, or invoice details
Please call Jennie or Tim at 219-873-2484.



U.S. Steel Midwest Training Center
US Rt 12 & Indiana Rt 249
Portage, Indiana

Take exit 19 off of I94, head North on IN 249
Follow IN 249 North about 1 mile to the "New" bridge
Cross bridge & follow signs to Midwest Training Center

